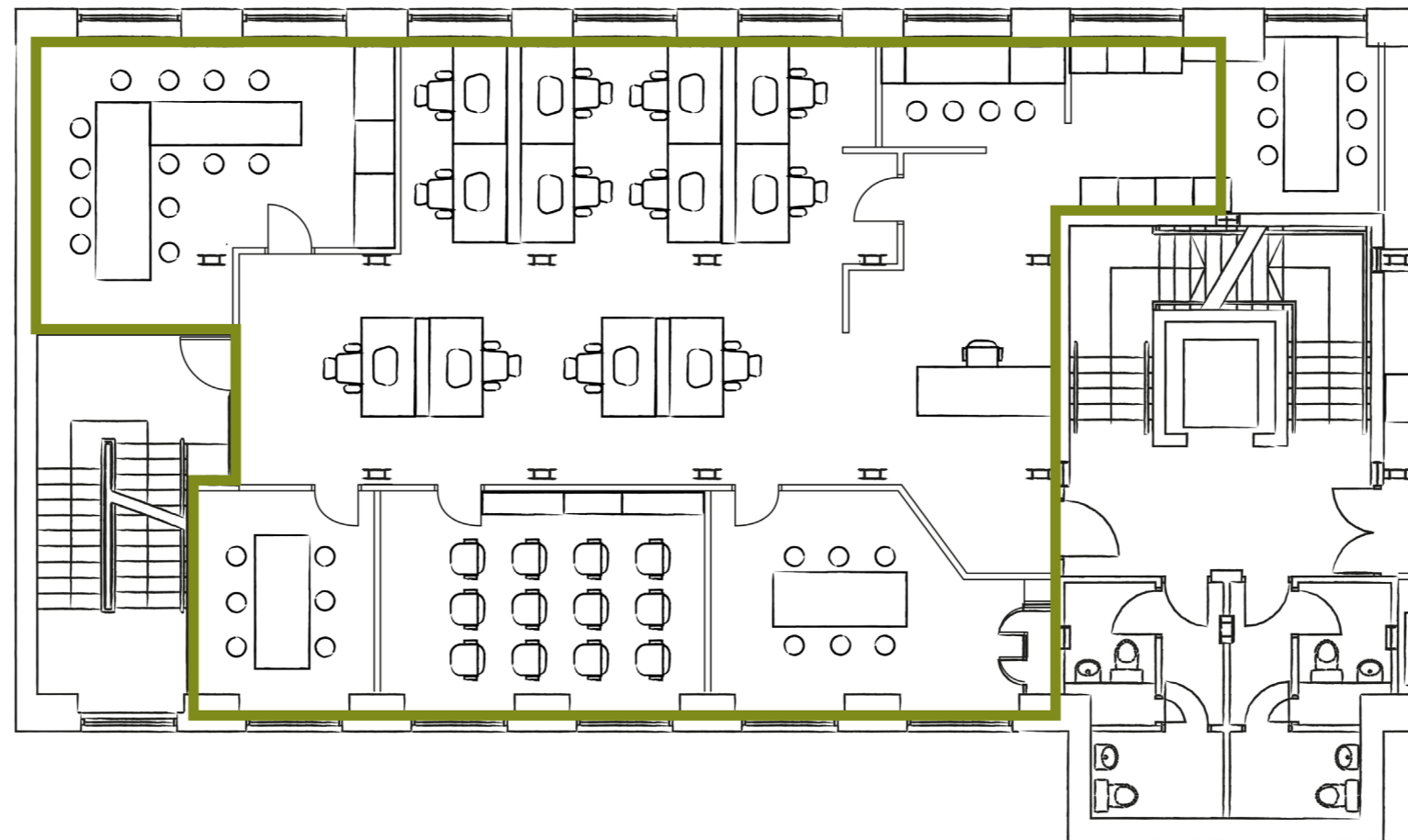


Eastgate – 1st Floor



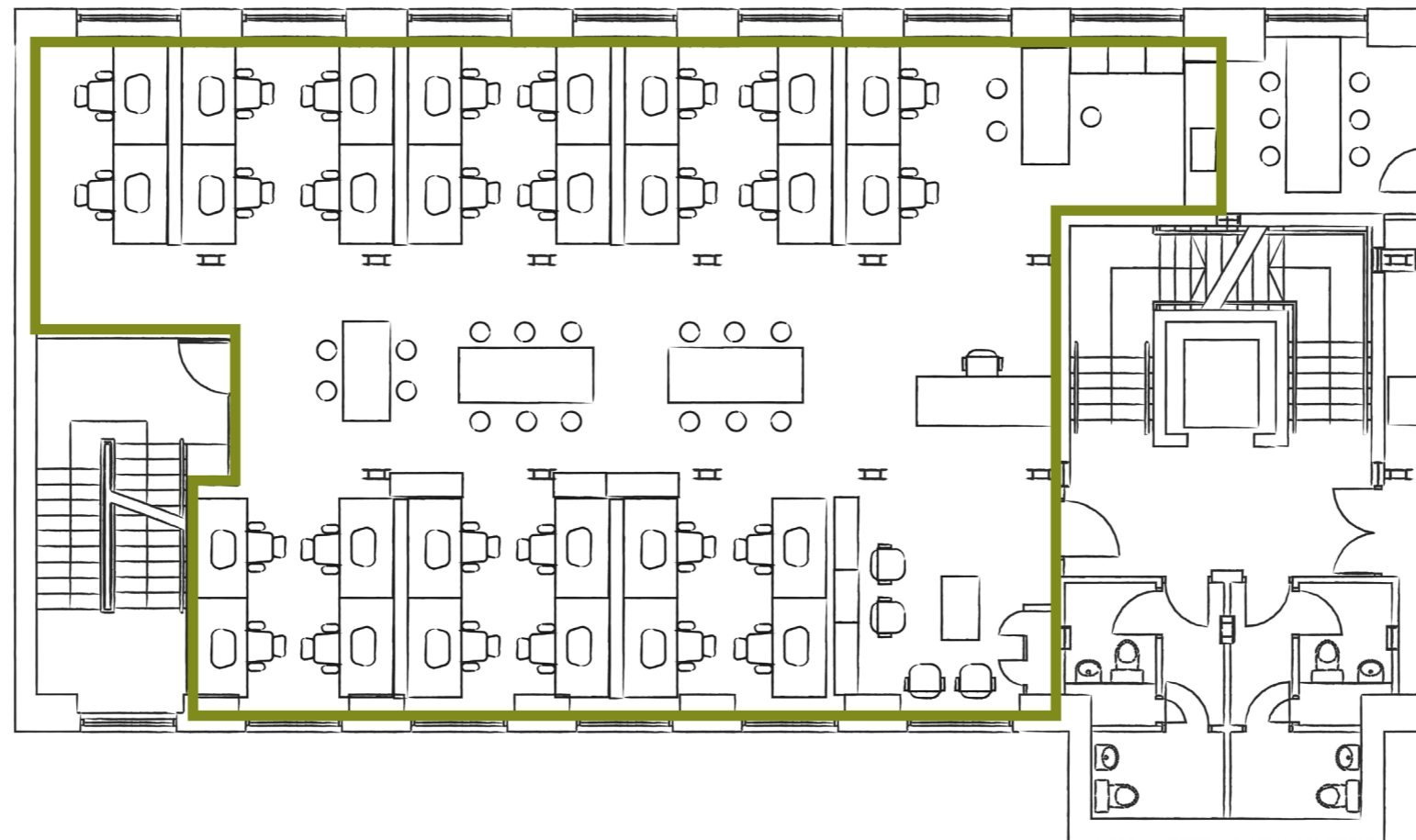
Eastgate is a former Victorian Warehouse which has been carefully restored into an award-winning workspace, and has become the heart of the Castlefield creative community.

It has incredible shared social spaces and an independent café on the ground floor which faces onto the canal with some of the best views in Manchester.

Included with everything is high-speed, fibre broadband, on-site smart meeting rooms for breaking out of the office, bike storage and showers to beat the traffic, and a dedicated concierge with 24 hrs access for those who prefer flexible working.

1875 sq ft	24 hour access
Can be taken fully fitted	Converted Victorian warehouse
Available now	Shared social spaces
Up to 21,000 sq ft	Award-winning offices
On-site parking	Free on-site smart meeting rooms
Independent café	High-speed BT fibre broadband
Shower facilities	Mail handling
Dedicated building concierge	Bike storage
Waterside views	

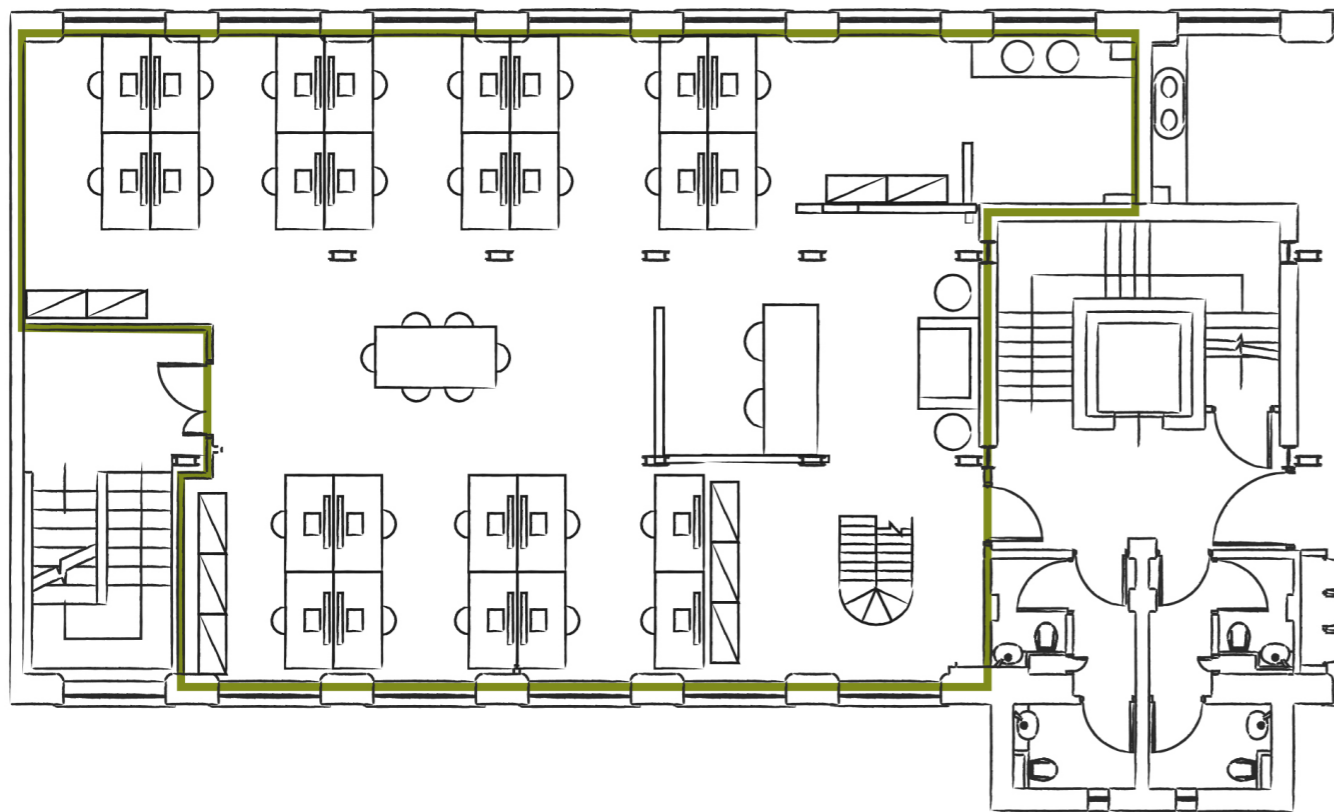
Eastgate – 2nd Floor



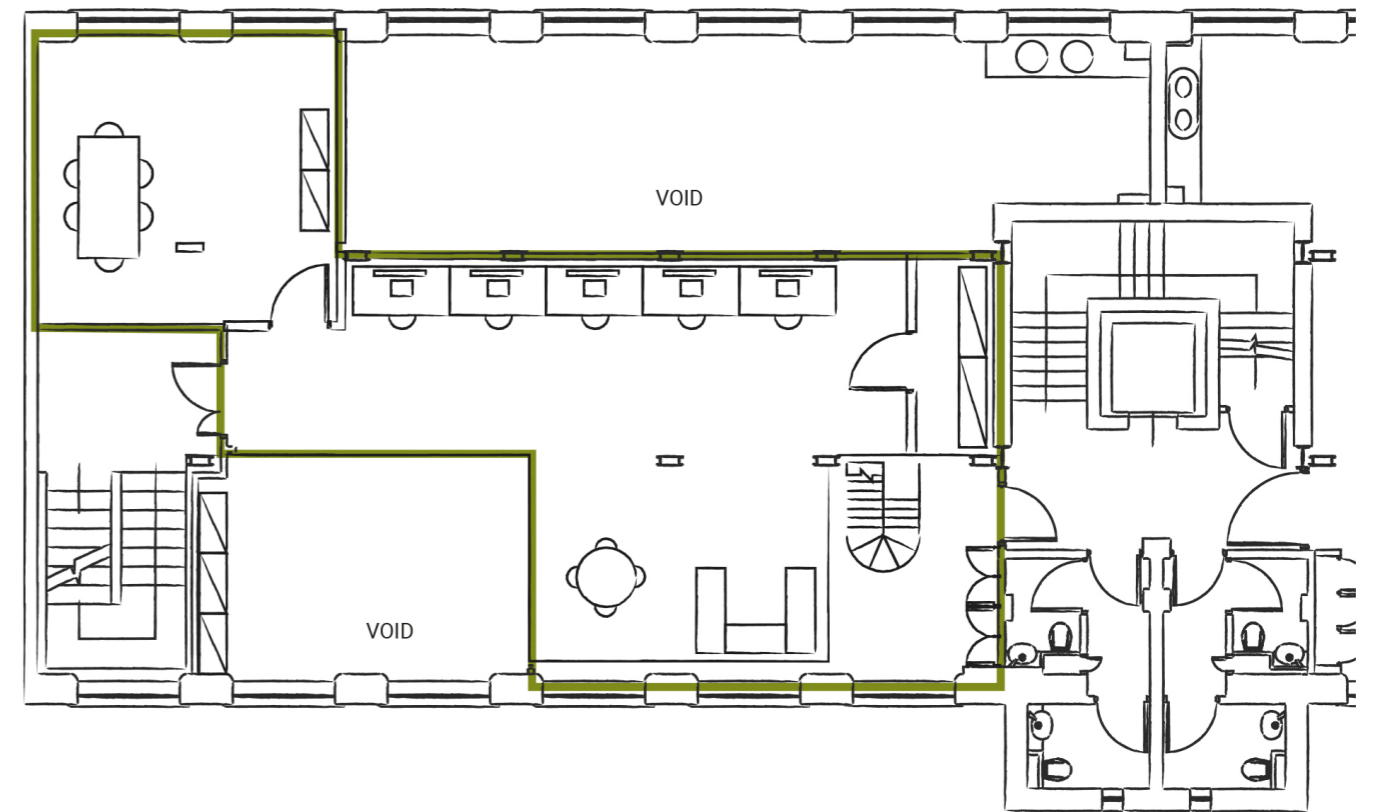
1795 sq ft	24 hour access
Available April 2022	Converted Victorian warehouse
Up to 21,000 sq ft	Shared social spaces
On-site parking	Award-winning offices
Independent café	Free on-site smart meeting rooms
Shower facilities	High-speed BT fibre broadband
Dedicated building concierge	Mail handling
Waterside views	Bike storage

Eastgate – 3rd Floor

3rd Floor



Mezzanine



2387 sq ft

Character mezzanine level w/ meeting room

Available May 202

Up to 21,000 sq ft

On-site parking

Independent café

Shower facilities

Dedicated building concierge

Waterside views

24 hour access

Converted Victorian warehouse

Shared social spaces

Award-winning offices

Free on-site smart meeting rooms

High-speed BT fibre broadband

Mail handling

Bike storage