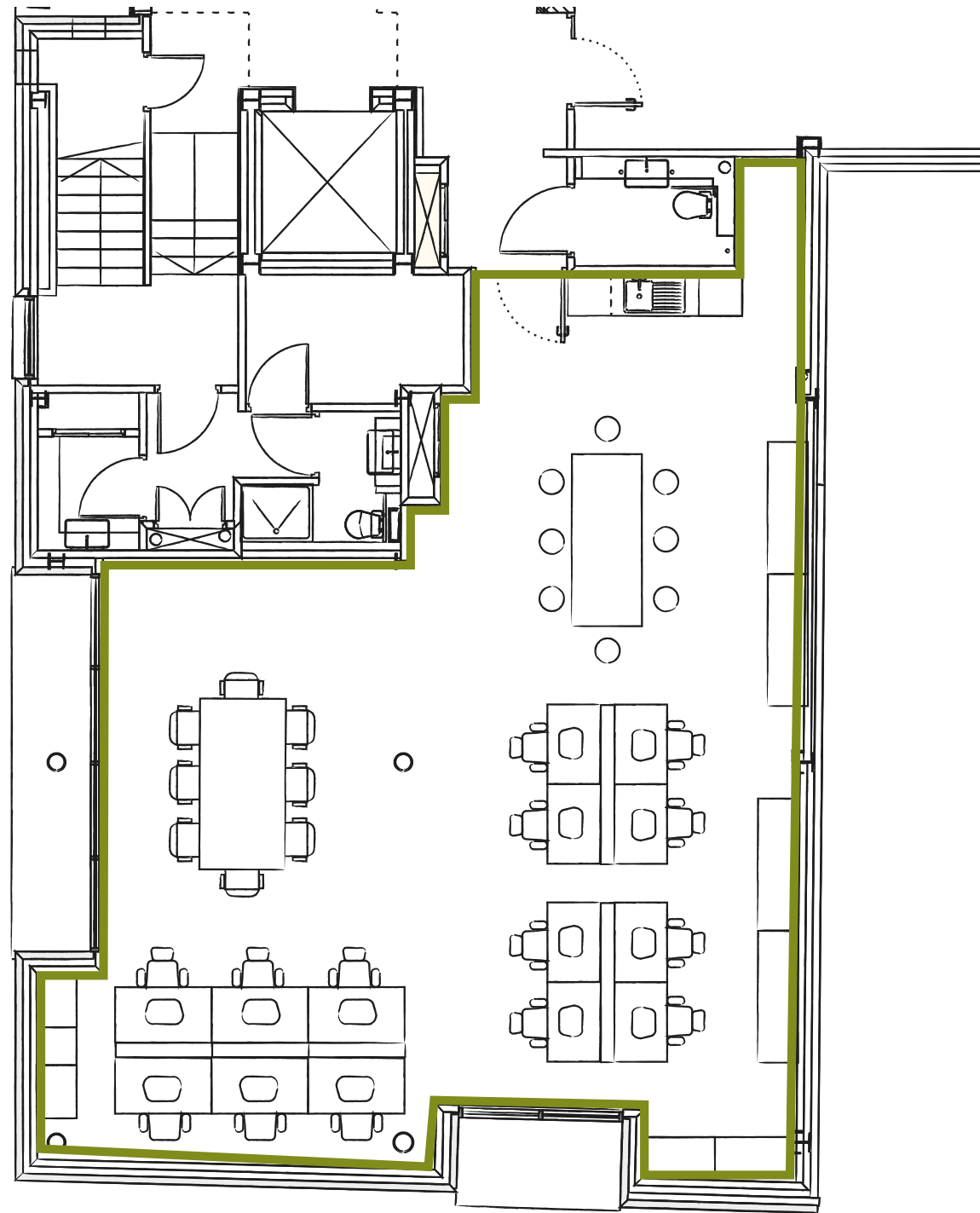


No.2 Commercial – Ground Floor



Commercial Street is the home of great contemporary design. It's right in the mix of the city and surrounded by some of Manchester's best independent bars and restaurants.

No.2 Commercial St is a new workspace development, designed by OMI Architects. It's nestled right in between many award-winning agencies and architectural practices. Commercial St also neighbours the new towers of Deansgate Square, including its shops and pop-ups.

It's less than a 2-minute stroll to Deansgate tram and train station, and only short walk from the Hilton Hotel and Beetham Tower. It's within view of some iconic eateries and bars of Manchester. It's also close to First Street's theatre, bars and restaurants too.

Bike storage	Brand new office development
Shower facilities	Designed by OMI Architects
Dedicated building concierge	City centre location
24 hour access	(2 minutes to tram +train)
Mail handling	High-speed BT fibre broadband
Waterside views	On-site parking
24 Hour access	Fully fitted space with kitchen and meeting room
Polished concrete and timber floor	